

HIGHLINE


notes

August 2011

STOP
the
**Regional Haze
Craze**



**Cass County
Electric Cooperative**

Your Touchstone Energy® Partner 

Highline Notes

Volume 69, Number 7



Editor
Carrie Carney, ccarney@kwh.com

Designer
Jocelyn Lura, jlura@kwh.com

Printer
Forum Communications Printing

Board of Directors
Wendy Loucks, Chairman
Russell Berg, Vice Chairman
John Froelich, Secretary
Sid Berg, Treasurer
Douglas Anderson
Bill Bertram
Robert Huether
Jeff Triebold
Steve Swiontek

Executive Staff
Scott Handy, President/CEO
Brad Schmidt, Senior Vice President of
Transmission and Distribution Services
Marshal Albright, Vice President of Member
and Energy Services
Chad Sapa, Vice President of
Corporate Services/CFO
Tim Sanden, Vice President of Information
Technology/CIO

Highline Notes (USPS 244-740) is published monthly except for June by Cass County Electric Cooperative, Inc., 3312 42nd St. S., Suite 200, Fargo, ND 58104. Periodicals postage paid at Fargo, North Dakota 58051, and at additional mailing offices.

Subscription Rate: 28¢/month.

POSTMASTER: Send address changes to Highline Notes, 3312 42nd St. S., Suite 200, Fargo, ND 58104.

© Copyright Cass County Electric Cooperative 2006. All rights reserved.
Printed in the U.S.A.

Contact us

Billing questions/ start or stop service:
701-356-4430 or 888-277-4422
Emergency or Power Outage:
701-356-4499 or 888-277-4424
Other questions:
701-356-4400 or 800-248-3292
Call before you dig:
800-795-0555 or 811

contents

feature stories

4 REGIONAL HAZE

6 EMERGENCY FOOD PANTRY

9 COMMITMENT TO COMMUNITY

11 DOLLARS FOR SCHOLARS



Cover photo courtesy of Basin Electric Power Cooperative



in every issue

3 editorial

12 recipes

13 photo of the month

14 the ad pages



OPERATION ROUND UP IS IN NEED OF DIRECTORS FOR DISTRICTS #2, 4, 5 & 7.

editorial

EPA: FRIEND OR FOE?

by Scott Handy, CCEC President/CEO

I was 12 years old on the very first Earth Day, April 22, 1970. My 6th grade class cleaned road ditches outside the small northern Minnesota town where I grew up. I berated my grandparents for throwing into a pile in the woods anything they couldn't burn in the 'burn barrel.' My junior high, high school and college curriculum featured many classes in ecology. All through college and a few years into my first full-time job I went for days at a time without starting my car. My very first job at Cass County Electric had me doing energy audits almost full time, helping members reduce energy use, and that early training in energy efficiency and conservation has influenced my entire 29-year career here.

I guess what I'm trying to make a case for is that I care deeply about our environment. I am not aware of a single colleague here that doesn't. Your cooperative has been and will continue to be good stewards of the environment, and we have and will continue to abide by all the environmental regulations (and there's a ton of them) that apply to our industry.

The federal Environmental Protection Agency (EPA) is the entity that governs environmental matters in our nation. Its job is writing and enforcing rules to accomplish goals set by Congress. In many cases the EPA acts through local states to custom-fit local situations to comply with EPA rules. In our case the North Dakota State Department of Health acts as the local arm of the EPA. This is appropriate because our state has many unique characteristics that don't fit neatly into a "one size fits all" federal approach. More on that in a moment.

One of the most significant laws over which the EPA has jurisdiction is the Clean Air Act. The Clean Air Act was first passed by Congress in 1963, but the Act as we know it today really has its roots in major amendments passed in 1970. Further major amendments were made by Congress in 1977 and 1990.

The Clean Air Act has done many very positive things over the years, according to the ND Department of Health and a former head of the EPA's Office of Air and Radiation. And I think we have seen the benefits right here in our state. The American Lung Association

rates us as having among the cleanest air in the nation, including the air in counties where lignite coal plants are located. The ND Department of Health states that nitrous and sulfur dioxide emissions have been reduced by half since 1999, and are being reduced yet again through Minnkota Power Cooperative's most recent emissions controls investments.

You'll see references to an EPA rule called "Regional Haze" elsewhere in this issue. Minnkota as well as Basin Electric Power Cooperative have worked hard and invested hundreds of millions of dollars to meet Regional Haze requirements. The ND Department of Health determined what technologies would be the most effective for the specific conditions found in ND lignite-fired plants using cyclone boilers, as Minnkota's Young station plants use. These technologies, already in place and up and running, reduce Regional Haze-related emissions by 60% or more. Mission accomplished, right?

Not according to the EPA. The EPA just a few days ago alerted North Dakota that a 60% reduction is not enough and it will set aside the ND Department of Health plan in favor of its "one size fits all" federal implementation plan. This could take place as soon as August and a 60-day comment period will then start. According to the July 21, 2011 Bismarck Tribune, this is "the first time in regulatory history that the EPA takes over a state's authority to manage a federal program."

Here's why we as CCEC members must comment to EPA on this issue: the EPA's federal implementation plan could require an additional \$500 million investment by Minnkota in an attempt to go from a 60% emissions reduction to an 85% reduction. It's one thing if that investment would accomplish some real objective. However, there are three major problems with the federal plan: 1) It has not been proven to work with ND lignite-fired cyclone boilers. In fact, tests done at the Coyote plant in ND showed that the EPA-favored technology failed after two months of operation. 2) The difference between a 60% reduction and an 85% reduction is not perceptible to the human eye, according to the ND Department of Health, Minnkota's environmental engineer and



others. 3) The ND Department of Health has found that any haze problems in our state's target areas (such as Theodore Roosevelt National Park) – and there are very few problems – come not from ND but from other states and countries.

Back to the title: is EPA a friend or a foe? I would say some of each. I'm proud of the work and investments that Minnkota Power and others in our state have done to make our environment increasingly clean. It's made a difference, and we live in a far cleaner environment than we had on that first Earth Day 41 years ago. But in setting aside our state's local expertise and experience with local conditions in favor of an inflexible federal plan that most likely will fail and at best will add over 30% to already-increasing wholesale power costs, the EPA has gone too far.

Please join us in letting the EPA know that the state implementation plan for Regional Haze, established by the ND Department of Health with its superior knowledge of local conditions, should be honored in favor of a federal takeover by EPA. Please refer to other articles in this issue as well as www.kwh.com for ways to make your voice heard.

The Regional Haze Craze Enough is Enough

EPA, state of North Dakota dispute over emissions

Cass County Electric Cooperative members are encouraged to jump on board what could be called the “enough is enough” campaign. You are very much aware of the significant rate increases brought on by wholesale power cost increases the past couple of years. Now a new potential for even larger increases is on the near horizon. The issue is called “Regional Haze” and involves a dispute between the Environmental Protection Agency (EPA) and the State of North Dakota. CCEC members are encouraged to let the EPA know that it should accept the plan developed by the state of North Dakota to improve visibility at the region’s national parks. If the EPA proceeds as it now appears it will, we could be forced to pay as much as \$500 million in additional capital investments to put in

more emissions-reducing technology at the Milton R. Young Station. Here’s the real rub – the technology that the EPA is demanding be installed hasn’t been demonstrated to be compatible with lignite-fired coal plants and cyclone boilers! And even if it can be made compatible, it’s very doubtful that it will provide the results the EPA is claiming. In other words it’s highly doubtful that using this technology will improve the visibility in the target areas or anywhere else. Minnkota Power Cooperative, our wholesale power provider, just completed \$420 million in capital investments at the Young Station for environmental upgrades. Spending a possible \$500 million or more for no perceptible improvement in visibility simply doesn’t make any sense!

The dispute between North Dakota and the EPA is over how the state wants to meet the Regional Haze program federal regulations aimed at curbing emissions from coal-based plants and industrial sources to improve visibility at natural areas such as Theodore Roosevelt National Park in western North Dakota. This is a visibility and not a health-based program, according to our State Department of Health.

Terry O’Clair, the state Department of Health’s air quality director, said the EPA plan will cost plant owners millions of dollars and force them to use technology that is not proven to work on lignite. The state favors a technology that is proven to work on lignite, and will reduce more than 60 percent of the nitrogen oxides (NOx)



emissions. Minnkota has already put that technology in place with Over-Fire Air with Selective Non-Catalytic Reduction (SNCR).

“We’re saying this is the best, because we don’t know if the other one will work,” O’Clair said.

The EPA is ignoring North Dakota’s authority and local knowledge. A state’s authority and flexibility to regulate its own clean air programs is an essential part of the Clean Air Act. The Act is designed to prevent the federal government from substituting its inflexible judgment for a state’s superior knowledge of local conditions and needs.

North Dakota officials plan to fight an effort by the EPA to take over the state’s Regional Haze program that will affect the Young Station. We plan to help with the battle and are also asking members to be involved. We believe the EPA should approve the North Dakota Department of Health State Implementation Plan (SIP).

The EPA disagrees with the SIP for addressing NOx emissions at Minnkota’s Young Station and Basin Electric Power Cooperative’s Leland Olds and Antelope Valley plants. The EPA wants to use technology called Selective Catalytic Reduction (SCR) that the agency believes will reduce more than 85 percent of the NOx emissions leaving the plants’ stacks. The EPA has indicated it intends to release its final plan on this Regional Haze issue as soon as August, and then hold a public comment period.

We hope an agreement can be worked out between the state and the EPA. If not, we’re going to need help from the members who pay the electric bills. In

July, a website, www.stopepand.com, was developed to help facilitate comments on the proposed regulations. The site is active and once it is ready for comments, we’ll let you know, and tell you more about the effort in an upcoming publication.

The bottom line is if Minnkota is forced to put in more emissions controls on top of the work just completed at the Young Station, we could face another 30 to 35 percent increase in wholesale power costs each year to pay for it. Partners for Affordable Energy, a coalition of businesses and organizations in North Dakota, plans a campaign to get the public involved in supporting the state plan. Spokesman Steve Van Dyke said the issue is about visibility, not health.

“The EPA has decided to follow a ‘one-size-fits-all’ pattern in issuing a federal implementation plan,” he said.

This all comes during a year in which the American Lung Association’s State of the Air annual report gave eight North Dakota counties “A” grades for lack of ozone, also known as smog.

The association has compiled a State of the Air annual report each of the past 12 years, using local data that is submitted to EPA. This year’s report covers the years 2007 to 2009.

The eight counties, which are chosen because of major population centers or proximity to national parks and grasslands, include Billings, Burke, Burleigh, Cass, Dunn, McKenzie, Mercer and Oliver. Minnkota’s Young Station is located in Oliver County. North Dakota is one of 12

states to meet strict federal ambient air quality standards.

“North Dakotans breathe some of the cleanest air in the United States, in part because of emissions control technologies at the state’s seven coal-based power plants,” Van Dyke said.

The consumers of this region support clean air and have paid for those instruments, but we need everybody to get together and let the EPA and others know “enough is enough.”

What you can do:

- Write to our Congressional delegation and thank them for their support of Cass County Electric Cooperative members on this and several other issues involving the EPA. Encourage them to be especially watchful on the regional haze rule issue as it plays out in North Dakota. Their addresses are:

Rep. Rick Berg
323 Cannon HOB
Washington, DC 20515
(202) 225-2611

Sen. Kent Conrad
530 Hart Senate Office Building
Washington, DC 20510-3403
(202) 224-2043

Sen. John Hoeven
120 Russell Senate Office Bldg.
Washington DC, 20510
(202) 224-2551

- For more information about Regional Haze and other industry information, visit our web site at kwh.com or go to www.stopepand.com.





Emergency Food Pantry

helps those who've fallen on hard times

Linda Clark

Director of the pantry for 10 years,
is the only full-time employee

Linda Clark loves her job. Each day she gets to help people – some she's met before, some are new. Linda is the director at the Emergency Food Pantry in Fargo. Each day she gives food to those who need it. She always gives smiles and sometimes gives hugs. "We're here for anyone who needs us."

Linda has worked for non-profit organizations for the past 20 years; the last 10 being at the Emergency Food Pantry. Some may think that a food pantry would be a hard place to work, seeing people each day that are in need of help. To Linda, it is a place that brings a smile to her face and makes her happy. Most people that visit the pantry have fallen

on hard times and need help to get back on their feet. "People drive by us every day and don't see us. They don't find us until they need us and they usually never dreamed they'd have to come here," she explained.

Individuals can get assistance from the pantry four times per year. They must have a referral, which can be obtained through social workers, churches, etc. There is also a network of other pantries in the area – most serving individuals once per month.

In 2010, the pantry served 22,933 people and had 500 volunteers. On average, 25 families are served per day; on a busy day 40 families are served. The pantry needs three volunteers per day.

There are three main events that gather food and donate to the pantry – Fill the Dome, a Boy Scouts drive, and a Postal Carriers drive. People can drop off donations at the pantry, at any Hornbachers, and at SunMart and CashWise in Fargo. Items donated must be non-perishable. By the end of August, donated food starts to run short.

Stories of the pantry

Linda has experienced many people's life stories at the pantry and shared a few that are inspiring. She remembers a woman who came to the pantry. She'd driven to Fargo from a small, rural town. She told Linda that she was worried about getting home, thinking she didn't have enough gas to make it. As luck would have it, a five dollar bill had been found at the pantry that day. Linda gave the woman the money for gas. In the not-too-distant future, the woman returned, giving Linda ten dollars. She was so grateful for the help and felt it was her turn to help, too, making a donation to the pantry.

One day, as Linda was taking the trash out to the dumpster, she came upon a man who, by the look of it, needed help. He refused to come inside the pantry, citing how dirty and unkempt he was. Linda offered to go inside and gather groceries for him. He said he only needed four items: tuna, mushroom soup, crackers and instant coffee. She obliged. A month later he returned, unrecognizable. The man walked into the pantry, his head held high. He'd cleaned up, haircut and

all. He told Linda he was moving on to a new location, but requested the same items, once again, for the road. Again, she fulfilled his request. It's people like this, that come into Linda's life, that she wonders "Where did he go?" and just hopes that he is ok.

On another day, a woman came to the pantry with her child. The woman was upset and scared. She had recently moved to the area with her husband. Once they arrived, her husband left her in a city where she didn't know her way around or know anyone. The next month, she returned, happier, needing help for one more month so she could get on her feet. She'd found a job and a local church had helped her find an apartment. That was the last time Linda saw her.

Linda tells of others who have fallen on hard times: Soldiers who have just gotten out of the military, yet haven't gotten their benefits yet; teenagers who have come to this area because they've heard that there are jobs here – only to find that they need help getting by before they find a job or before the first paycheck arrives; sometimes it is because the family car broke down and all extra money has to go to the repair costs. People need help for different reasons and the Emergency Food Pantry is here to help.

The future of the pantry

While the current location of the Emergency Food Pantry has served well for many years, the pantry would benefit by moving to a new site. There is a new downtown location that the pantry plans to move to. The estimated cost to move to this location is one million dollars. Two-thirds of the money has been raised so far. The new location, in downtown Fargo, offers an increased storage area, larger coolers and refrigeration, a more suitable work and sorting room, and more. The new building is much larger and also much more energy-efficient, so the money saved in heating alone will make the move viable.

No matter the location, Linda Clark plans on being at the pantry. "I love doing this, I just think it's a great place. It is amazing," she said of what the pantry does, of the volunteers, and of all those who come for help.



Alison Sizer, CCEC employee, volunteered at the emergency food pantry

"People doing together what can't be done individually"

THE OPERATION ROUND UP board meeting

SPOTLIGHT DONATION:

At the June 2011 board meeting, Operation Round Up board approved a donation to "Kindred Fire Department".

APPLICATIONS REVIEWED JUNE 2011:

Organization	14
Individual	1
Emergency	1

APPLICATIONS APPROVED:

Organization	12	\$30,000
Individual	1	\$1500
Emergency	1	\$1000

APPLICATIONS DENIED: 2

APPLICATIONS TABLED : 0

Thank you for helping those in need

2011 YEAR-TO-DATE SUMMARY:

Per Member's average contribution	\$2.50
Average member participation	75.8%
Total income	\$58,361.78
<small>(Income includes contributions, interest earned, and donations/memorials)</small>	
Total applications approved	28

Interested in joining the Operation Round Up team as a director? The sixteen member board of directors meets quarterly and determines the distribution of funds based on available funds, assistance required, and severity of needs. Please contact Linda at 701-356-4401 for additional information.

To enroll, withdraw, or request additional information on the Operation Round Up Program, please contact our member accounts team at 356-4430 or 800-248-3292.



Power Plant Tour

On Tuesday, June 14, 49 CCEC members and two CCEC employees embarked on the summer's power plant tour. The group left Fargo around noon and stopped at the Ashtabula Wind Energy Center. They stayed the night at the Seven Seas Hotel in Mandan, where they enjoyed dinner and a presentation by Minnkota Power Cooperative. The next morning, the group set out for the Milton R. Young station near Center where they toured the plant and coal mine, and had lunch. They arrived back in Fargo that evening.

CCEC hosts a power plant tour each summer. Watch for details in a spring 2012 issue of Highline Notes.



Reason #14 to sign up for **e-Bill**

It is free and simple to use!
You can view monthly cost, average cost, monthly usage and average usage.
Plus, sign up now and get \$10!
(\$10 offer good once per account.)



RED RIVER VALLEY FAIR



RALLY IN THE VALLEY

Commitment to Community

Cass County Electric Cooperative strives to be an integral part of the communities we serve. In addition to providing reliable electricity, we support a variety of charities, promote community and economic development, and sponsor a variety of local and regional events.



COMMUNITY OF CARE

CAN YOU SEE A DIFFERENCE?

ND
HAS
CLEAR
SKIES
AND CLE
AN AIR EPA
PLAN HAS HU
GECOSTSAN
DZERO BENEFITS
STOP EPAND.COM

ND
HAS
CLEAR
SKIES
AND CLE
AN AIR EPA
PLAN HAS HU
GECOSTSAN
DZERO BENEFITS
STOP EPAND.COM

NEITHER CAN WE.



Stop EPA from imposing huge, unnecessary costs on North Dakota.

Though you can't see it, the difference is nearly **\$700 million**. That's how much more it would cost for EPA's plan to regulate visibility in North Dakota over the state's existing plan.

When it comes to EPA's plan, the benefits are hazy and the huge costs are crystal clear.

Go to **StopEPAND.com** to learn more.

Dollars for Scholars

2011 Recipients



Brianna Bredeson
Barnes County North
Parents: Mick & Myra
Bredeson



Chelsey Anderson
Central Cass
Parent: Diane Poulson



Courtney Lault
Enderlin
Parents: Darrell & Jennifer
Lault



Karley Thorson
Fargo
Parents: Howard &
Paulette Thorson



Keely Torgerson
Kindred
Parents: Dave & Nancy
Torgerson



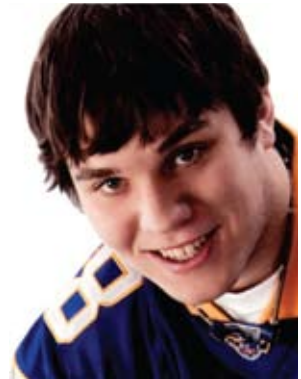
Nathan Qual
Lisbon
Parents: Rodney & Angie
Qual



Eugene Smith
Litchville-Marion
Parents: Brent & Rhonda
Smith



Lyndsey Person
Litchville-Marion
Parents: Bob & Amy
Person



Michael Allarding
Maple Valley
Parents: Rick & Shelly
Allarding



Tyler Swanson
Northern Cass
Parents: Curt & Christi
Swanson



Morgan Herz
Page
Parents: Glenn & Karla
Herz



Daniel Julson
Richland
Parents: Nadine & Ron
Julson



Kayla Sorby
Valley City
Parents: Kory & Cheryl
Sorby



Oksana Tyulyandina
West Fargo
Parent: Irina Tyulyandina

Each year, Cass County Electric contributes \$500 to each Dollars for Scholars chapter in our service area.

(NOTE: Cass County Electric Cooperative does not select the winners.)



food

RECIPES FROM YOUR KITCHEN

Email to recipes@kwh.com or mail:
Cass County Electric Cooperative; Attn: Carrie Carney
3312 42nd St S, Suite 200, Fargo, ND 58104

BBQ Glazed Salmon with Black Bean Compote

Leily Fernandez, Fargo, ND

BBQ Sauce:

- 1/2 cup ketchup
- 2 tablespoons brown sugar
- 2 tablespoons rice wine vinegar
- 1 tablespoon Worcestershire sauce
- 1 tablespoon stone-ground mustard

Black Bean Compote:

- 2 tablespoons grapeseed oil
- 1/2 cup small diced red onion
- 1/2 cup small diced bell pepper
- 1/2 cup diced tomatoes
- 3 cups canned black beans, rinsed and drained
- Salt and freshly ground black pepper
- 1/4 cup red wine vinegar
- 2 tablespoons minced fresh parsley
- 1/4 cup minced cilantro

Salmon:

- Oil, for grilling
- 6 (6-ounce) salmon fillets
- Salt and freshly ground black pepper

Directions:

For the BBQ sauce: Whisk together all the ingredients in a bowl, add to a saucepan, and cook over low heat for 5 to 6 minutes, or until the flavors have blended. Reserve.

For the black bean compote: Heat the oil in a saucepan over medium-high heat until on the verge of smoking. Add the onions and cook, stirring frequently, until the onions are slightly translucent, about 5 minutes. Reduce the heat to medium, add the peppers, tomatoes, beans, salt and pepper, to taste, and cook for 9 to 10 minutes. Remove from the heat, add the vinegar, parsley, and cilantro, stir well. Keep warm.

For the salmon: Preheat a gas or charcoal grill to medium-high heat. Coat the grill plates with oil to prevent sticking. Season the salmon fillets with salt and pepper and grill for 7 to 8 minutes on the first side. Carefully flip the fillets over and continuing cooking for 5 to 6 minutes. Once cooked, remove and glaze with the BBQ sauce. To serve, spoon the black bean compote onto the center of a plate and top with the glazed salmon.

Lemon Egg Drop Soup

Leily Fernandez, Fargo, ND

Ingredients:

- 8 cups chicken broth
- 4 large eggs
- 2 lemons, juiced
- 1/4 teaspoon lemon pepper
- 1 tablespoon lemon zest
- Grated Parmesan

Directions:

Bring broth to a boil in a 3 quart saucepan over medium heat. In a medium bowl, whisk eggs, lemon juice and lemon pepper until well blended, then slowly whisk in 1 cup of the hot broth. Lower heat; add egg mixture, stirring constantly. Cook over low heat, stirring until heated through. (Don't boil! Eggs will curdle.) Remove from heat and stir in lemon zest. Ladle into serving bowls and sprinkle each serving with a little Parmesan cheese.

SEND US YOUR RECIPES

photo

NORTH DAKOTA THROUGH YOUR EYES

We look forward to publishing member photos that encompass anything "North Dakota". Email your photos for publication to photos@kwh.com in a high resolution format along with the first and last name of the photographer. One photo will be published per month.



Checking soybean loss...

by, Jon McSparron, Grandin, ND

SEND US YOUR PICTURES

ads

PLACE YOUR FREE AD IN FRONT OF THOUSANDS

20K Q5 5th Wheel hitch, only used a couple of times, 20K towing capacity, 5,000 lb. pin weight capacity, 3 pt progressive resistance limits lateral movement 7°, positive locking dual jaw system w/ 360° pin contact & lock indicators for peace of mind, \$499/OBO. f_jasonw@hotmail.com.

826 JD snow blower w/ electric start & chains, very nice, \$500. JD STX38 riding lawn mower w/ blk dock, works good, \$400. 701.484.5262 or 701.729.4685

2 - Mosquito Magnet detector, used very little \$210/ea/OBO. 1 - LTX 3000 lumbar rehabilitation system, like new, \$465/OBO. 701.347.5253 day's or 701.428.3889 evenings

AMF full size pool table, auto ball return, newer fabric, exc cond, one piece solid top. 701.371.4737 or ngludt@hotmail.com

Computer desk, metal L shaped w/ 2 drawers on both sides, beige.\$50 Nebulizer machine, \$75. 701.541.2726

Honda 3000 EU, generator brand new cond, approx 20 hrs, \$1400. 701.866.8538

5' x 7' rug for dining/living room, \$75 (greens/browns/reds/black squares). 13" TV, \$30. Blk LEER pickup topper, Chevy 5.5' bed, 3 yrs old, \$500. Graco 3900 gas-powered airless paint sprayer, HD, sprayer, gun, hose, \$750. 5 brown metal patio chairs, \$80. 701. 205.2038

AKC Registered Labrador pups w/ NFC, FC, NAFC, AFC, CP, & MPR & GMPR pedigree, pups will be great hunting companions & family pets. Born April 22, 2011, 3 blk males avail. 298.2412 or dvetter@tciteam.com

Armoire TV stand w/ matching coffee & end table, great cond, closing doors on top, glass doors on bottom, modern, holds 40" flat panel TV, only had for 2 yrs, remodeling, \$850/OBO. Small china hutch & bakers rack. 701.282.5029

100 gal hard plastic liner for a landscaping pond, never used, \$75. Half wine barrels for planter, \$5. Combo metal storm door 36", \$10. Fold down canvas fish house on plastic sled, \$25. 701.238.3337

3- new Wearever commercial 9"round pans for, \$25. Med size doghouse, good shape, \$15. Middle single passenger seat, light gray interior

for 04 Pontiac Montana van, never used, had been removed for space for dog kennel, \$25. 701.277.0681 or 218.303.6830

New never used, Pride Revo scooter, three wheel, red, \$1500. 701.237.6579

L2 Gleaner combine, works good, \$300. 320 Flex head w/Crary cutting system, \$2000. Hurricane side arm ditcher, have \$24K in it, asking \$15K. 72 Plymouth Duster, body IH side delivery rakes, \$100. 30'sq bale elevator w/motor \$200/OBO. 701.924.8693

06 - 650 Yamaha Road Street, 8000 mi, one owner, serviced reg, dark/light gray, rear set w/ engine guards, 48 mi per gal, luggage carrier w/ back rest, 2 helmet w/shields M & F, chaps inc, \$4500. 701.232.4630

85 Ariens TR 8020 tiller w/Kohler 8 engine, serviced Sept. 08, \$450. 701.588.4525

01 Lennox fuel oil stove 023 series & 250 gal fuel oil barrel, service yearly, exc cond. 701.347.4604

85 Dodge Ram Charger, \$700. 4 rare 69 Dodge Polaris hub caps in gd cond. Aleutian commercial fisherman rain gear extra HD, orange, jacket size XL, B. BS size XXL, \$200. 701.261.5105

94 Chevy Cavalier convertible, white, 85k, gd cond, \$3250. 3 wheel bicycle, gd cond, \$100/OBO. 701.282.9428

Dept 56 snow village houses & accessories. 701.261.1877

03 Sunlite pickup camper, hard side, short/ long bed truck, good cond, A/C, furnace, 3 burner stove, flush toilet, 2-way frig, \$3950. 701.793.2345

85 Trans Am, blue, exc cond, one owner, \$6500. 79 Alumacraft fishing boat, trailer, newer 6 hp Merc trolling motor, \$700. 05 Harley Sportster 883, low mi, blk, \$5900. Pool table, 8 'slate, \$500. 701.292.9541 or 701.730.6387

African Ribbonwood antique dresser & mirror, \$175. 5-drawer chest, \$175. Mission style queen sleigh bed headboard, footboard & bed frame, \$100. If purchased w/ chest of drawers, \$300. If purchasing all matching pieces, \$350/OBO. 701.277.4872

Liberty Falls Village: 200+ pc miniature Americana collection depicts old western community of Liberty Falls, CO; small homes, mansions, businesses, village buildings, 40 boxes of access; sculpted & master-crafted highlighting architectural details of frontier town's way of life, \$200/OBO. 701.277.4872

Luverne stainless steel wheel to wheel running boards w/ wide stainless steel rear mud flaps off 99 Chevy ext cab pick-up, \$150/OBO. 701.282.0782 or 701.729.5162

Moss green apart-size down filled sofa & oversized chair w/ matching ottoman purchased from Room & Board, \$150. 5 x 8 area rug, matches couch/loveseat, earth tones, \$25. 701.588.4220

74 Orange Volkswagen Beetle, fresh paint, new tires, new exhaust system, runs good, \$3500. Wurlitzer Funmaker Special w/ dancing chords & cassette recorder, BO. 701.709.0460

79 Yamaha Motorcycle, commuter 3 wheeler electric start. Yamaha Elsinore CR 250 M Motorcycle, 24.5 X 32 10 ply tire. 860 MF combine complete or may sell parts. 701.762.3665

97 Buick Skylark, 125k, V6, \$500. 701.388.1503

12,000 Btu window AC, \$175. 8' Trac Rite roll-up shed door, \$30. Little Tikes basketball hoop, \$20. Gazelle exerciser, \$10. Yamaha trombone, \$350. Elec wheel chair, \$1200. Manual walker \$5. Roller walker w/ seat, \$50. Shower seats, \$10. Commode, \$15. 701.281.0835

AD POLICY

- All ads must be 40 words or less.
- Ads will be abbreviated following our guidelines.
- No real estate or commercial ads will be accepted.
- Ads are published for members at no charge as space permits on a first-recieved-first-printed basis.
- Ads are due by the 15th of the month prior to publication.
- Members may submit only one ad per issue.
- Ads must be resubmitted to run an additional month.
- Editor reserves the right to edit or reject any ad.
- Mail ads to:
Editor, Highline Notes
3312 42nd St. S. Suite 200
Fargo, ND 58104
Email ads to: ads@kwh.com (preferred)
Fax ads to: 701.356.4586

450 John Deere 7' hydraulic mower, \$700.
701.235.0139

Twin size Beds by Design mattress, was used on a hospital bed, will work on adj bed, \$600/OBO. Pd \$1100. Karen 701.793.2448 or racelady3646@gmail.com

Shopsmith 5 tools in one. 10" Delta table saw, w/ extensions, Shopsmith, 4" jointer, 12" planer, band saw, scroll saw, 6" belt sander, strip sander, 2 power units. 701.412.5191

PTO powered buzz saw w/blade, \$35. 62 Chevy bumper w/grill bar, \$100. Metal tool box, full size pick-up, \$20. 701.437.2863

1957 English buffet, \$400. 1920's wood table, 2 leaves, \$400. 1930 Oak bed, \$300. Blk iron table, \$20. Various antique bird cages, \$15-\$50. 1900's heat stove, \$100. 50 Cal Navy muzzleloader, \$175. Patio glass/iron table w/four chairs, \$400. Bikes & tools. 701.552.1449

Wooden queen size headboard, 6 drawer dresser, 3 drawer night stand, framed mirror, 6 framed pictures, \$435. 701.235.1100

14K Reese 5th wheel hitch, Lund American 15' runabout boat w/ 90 HP Mercury motor w/ trim & tilt, bow mounted trolling motor, trailer inc. Fiberglass topper fits F-250 short bed pickup. 701.532.0395

Maytag Wringer washer model E2L, 50 yrs old, \$100. 701.235.4147

Dependable, 96 Dodge Caravan, 4-cylinder, exc gas mileage, nice cond, \$1500. 701.298.0118

Kay 5 string banjo like new, hard case & more. 701.866.3737

84 Starcraft 18' Omc Stern drive (3 liter Motor). Access: trolling motor 24V-62# thrust, Pro Marine-triple bank-Prosport 20 plus charger, Lowrance depth finder, Garmin 240 fish finder/transducer, boat cover, spare prop, anchor, ShoreLand trailer (2 new tires), \$3000/OBO. 701.232.6553

09 Four Winns fish & ski boat, Horizons 183 w/ live well, foot controlled trolling motor, fish finder, CD player, snap on cover, matching factory trailer, very low hours, exc cond, stored indoors & prof winterized. 701.282.5558

Hockey equip: Size 4 1/2 skates, \$25. Easton breezers Jr. M 26" to 28", \$20. 11" Easton gloves, \$25. Bauer helmet, M, \$50. Shin & elbow pads, L Junior, \$15. Neck protector & girdle, \$10. 4 practice jerseys, \$10. 3 sets practice socks, \$5. PVC net, \$35. Metal net, \$50. Equip priced OBO. 701.281.9208

Hayward above-ground propane pool heater, 100,000 BTU input, great cond, \$150. 701.238.0217

Bruce oak flooring, both new & used, about 160 sq ft total, \$250/OBO. 701.282.7838

Englander high quality queen size mattress, exc cond, clean as new, \$175. 701.469.2283

1000 gal fuel tank w/ pump & hose. Wayne model 10 dispensing pumps for gas or diesel. Spread all grain spreader for steel bin. IH 1480 combine rims. 701.361.0678

Prof beauty shop set: condition air dryer w/ base dryer chair, upholstery in rose color, exc cond, \$100. 701.235.4999

Size 9 Reebok 9K pump ice skates, used for two years, good shape, \$125/OBO. 701.367.6705

GE 30" elec stove, like new. 4.215/65R, 16" tires. 94 Chevy club cab pickup, low miles, nice. 701.271.4772 or 701.540.7198

26" Avalon comfort series women's bike, alum light blue & silver frame, 7 speeds, extra wide shock absorbing seat, rode once, pd 99.99- \$55/OBO. 701.318.3534

82 KZ750 Motorcycle, new tires, \$850. 79 Chevy K5 Blazer w/85 body, \$1000. 2-Horse bumper pull horse trailer w/new steel & hitch, great tires, \$1200. 701.429.0004 or 701.429.7351 text

40' bi-fold door w/ controls, top beam, & roller guide. 42' x 64' pole barn (hanger) salvage: roof destroyed. Rafters, doors, etc. in gd shape. 701.730.3638

2000 Gal fuel tank, dbl lined, great shape w/ used gas pump, \$4000/OBO. (18) Grey fabric task chairs, \$12/ea. 701.998.2005

Pickup box trailer w/ jack, \$150. 701.924.8647

Dining table w/glass top, blk metals chairs exc cond, \$100/OBO. 701.282.5072

Model 175 JD riding lawn mower 38" deck new battery, extra set of blades. 701.205.6183

81 Chevy C10 pickup 305 V8, runs good, 94k, automatic, air, cruise control, no rust, kept in garage, has to be seen to appreciate, \$3700/OBO. 701.540.4864

Handcrafted hunting knives by the late welding instructor at Moorhead Technical School, purchase before the Dakota territorial gun show, one of a kind, make nice presents, \$65-\$85/ea. Knife blanks for you to start your own knife making. Gene 701.282.8536

36" Master craft steel door, brand new, white, 6 panel, right handed, for a six" wall, \$100. 701.281.9927

20' bale conveyor on a lift platform w/ wheels, 5 hp Briggs, \$250. 701.281.0202

01 Grand Am GT, 101k, new tires, red, 2dr, auto start, exc cond, \$4,800. 701.388.3836

Rainbow play system: wood roof, slide, rock wall, ships wheel, sling swing (3), 360 tire

swing, trapeze/rings combo, knotted rope with disk, monkey bar, climbing wall, step/rung ladder \$2100/offer. 701.318.4002

Cable flex personal gym system, pd 59.95 - \$25/OBO. 2- all in one printers, 15/ea/OBO. Queen size air mattress stand, less than 1 yr old, paid 99.99- \$45/OBO. 701.318.3534

2400 lb Newman vertical raise boat lift in exc cond, located at our lake home on Little Cormorant Lake, priced to sell! John 701.588.4455 or 701.361.4815

81 Dodge Ram, 99,800 mi, some rust, 4WD manual, gas, \$1000/OBO. 701.226.1665.

KWIK KLEAN grain cleaner, \$1500. 4 sheets used (Menards) white tin, 36" x 96", \$10/ ea. 701.945.2720

Wanted:
38" or 40" riding lawn mower w/ bagger in gd cond. 701.347.4604

Motorcycles & ATVs, all makes & models, running or not running cond, prefer mostly complete but will consider parts units. 701.361.7289

\$100-\$200 single garage. I'll move. Kindred, Leonard, Enderlin area. 701.238.2315

Free:
RCA console 27" color TV, very gd cond. 701.709.0460



MAKE
SAVING MONEY
AS EASY AS
SHOWING A CARD

YOU CAN NEVER SAVE TOO MUCH MONEY. THE CO-OP CONNECTIONS CARD CAN SAVE YOU HUNDREDS OF DOLLARS PER YEAR. VISIT WWW.KWH.COM FOR A COMPLETE LIST OF LOCAL AND NATIONAL DEALS.

SHARE A SQUARE



50th Anniversary Quilt

Help create the CCEC 75th Anniversary Quilt!



Send a quilt block to CCEC by December 1 and it will be part of the anniversary quilt. The theme for the quilt is "Power to the People." The block dimension must be: 12.5" x 12.5" unfinished. (The blocks will be 12" x 12" finished.) Blocks can be embroidered, pieced, appliqué, embellished, cross-stitched, etc. Please include your name and city on the block. Blocks must be 100% cotton.

If you have questions, please call Karen at 701.356.4461.

Send block to: CCEC, c/o Karen Egeberg, 4100 32nd Ave S., Fargo, ND 58104