

HIGHLINE NOTES

October 2010



October is co-op month!

Highline Notes

Volume 68, Number 9

Editor
Carrie Joyce

Printer
Forum Communications Printing

Board of Directors
Wendy Loucks, *Chairman*
Russell Berg, *Vice Chairman*
John Froelich, *Secretary*
Douglas Anderson, *Treasurer*
Sid Berg
Bill Bertram
Robert Huether
Jeff Triebold
Steve Swiontek

Executive Staff
Scott Handy, *President/CEO*
Brad Schmidt, *Senior Vice President
of Transmission and Distribution
Services*
Chad Sapa, *Vice President of
Corporate Services/CFO*
Tim Sanden, *Vice President of
Information Technology/CIO*

Highline Notes (USPS 244-740) is published monthly except for July by Cass County Electric Cooperative, Inc., 491 Elm Street, Kindred, North Dakota 58051. Periodicals postage paid at Kindred, North Dakota 58051, and at additional mailing offices.

Subscription Rate: 28¢/month.

POSTMASTER: Send address changes to Highline Notes, P.O. Box 8, Kindred, North Dakota 58051-0008.

© Copyright Cass County Electric Cooperative 2006. All rights reserved. Printed in the U.S.A.

Contact us

Billing questions/ start or stop service:
701-356-4430 or 888-277-4422

Emergency or Power Outage:
701-356-4499 or 888-277-4424

Other questions:
701-356-4400 or 800-248-3292

Call before you dig:
800-795-0555 or 811

CONTENTS

features

October is co-op month 3

Community of Care offers services to those in rural areas 6-7

A Co-op Connections card is coming to you! 8

2011 Youth Tour contest 9

2011 Director Elections 10

in every issue

editorial 4-5

recipes 12

picture of the month 13

the ad pages 14-15



October is co-op month

It's a time to celebrate our membership's ownership and voice in the cooperative

Neighbor helping neighbor. Cooperative helping community. Applying the basic cooperative principles, North Dakotans have worked together to help themselves, bringing the brilliance of light to homes, farms and businesses across the state.

As we observe Co-op Month in October, electric cooperative members should be proud of the success of the cooperative business model and the spirit of cooperation that these organizations promote.

What makes cooperatives special? Cooperatives are owned and controlled by those they serve. Each person has a voice and a vote in the co-op's activities. The cooperative way of doing business is a true example of grass-roots involvement and democracy in action. The power of the people is exemplified in all types of cooperatives.

Cass County Electric Cooperative was organized in 1937. The cooperative serves all or parts of Cass, Barnes, Traill, Richland, Ransom, Sargent, Dickey, LaMoure, Steele and Stutsman counties. Cass County Electric is governed by a nine member board. The chairman is Wendy Loucks, of Fargo, and the CEO is Scott Handy, overseeing 97 employees.

Pictured top to bottom: Ethan Sorenson, CCEC's 2009 youth tour winner and his father; a winner at this year's annual meeting; Max Burkhart, who pitched the first pitch at CCEC's day at the Redhawks and his father; members touring the Ashtabula wind energy center.





editorial
by Scott Handy
President/CEO

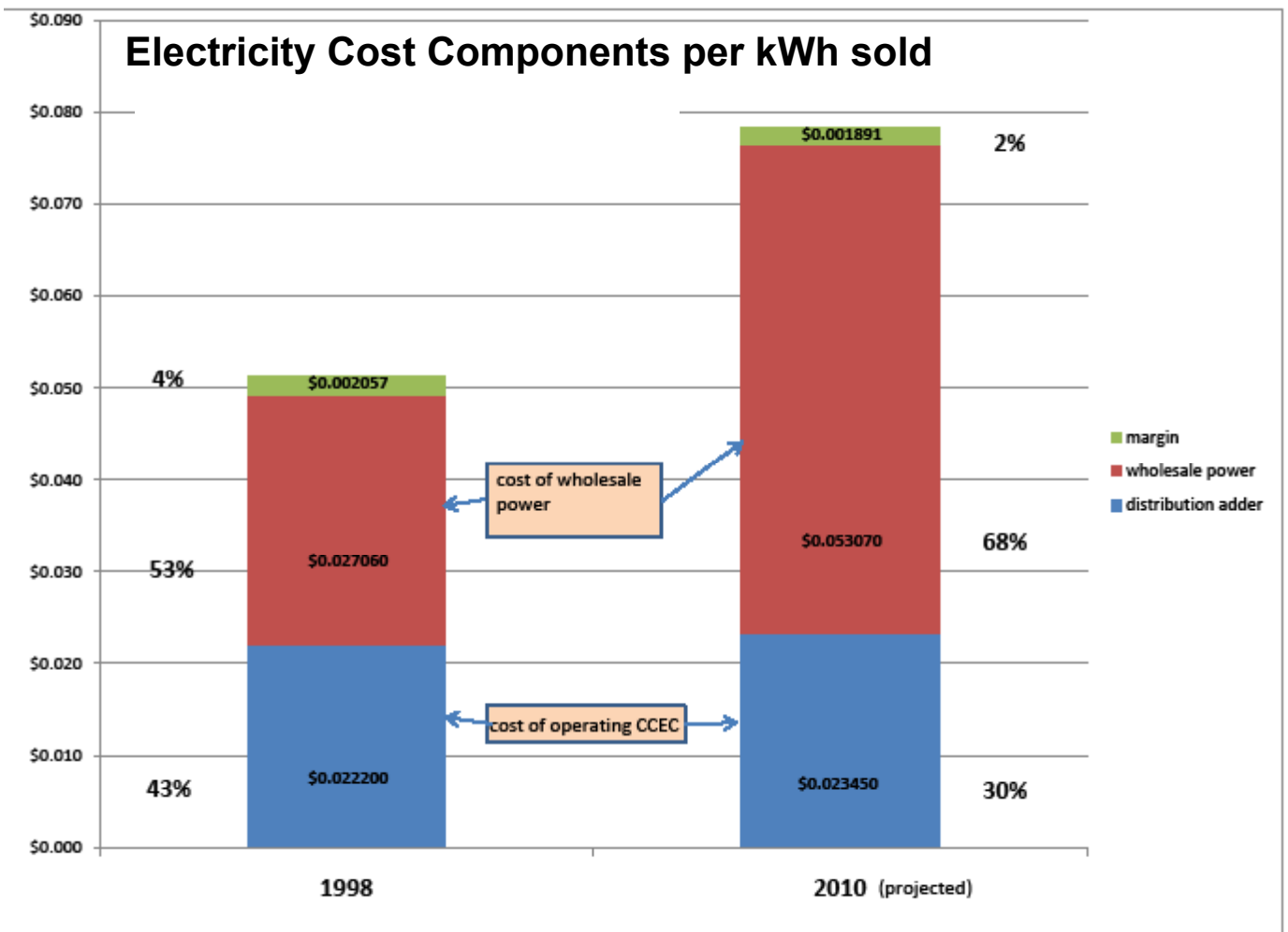
Wholesale power rates up more than expected in 2011

I've been writing for several years now about increasing wholesale power costs and the fact that they're going in one direction – up. This editorial includes an updated graph that you've seen before, but it is the best picture I've seen to show the impact of wholesale power costs on the retail electric bill. Please take a careful look at the graph as you read this article.

A year ago Minnkota was projecting a 2010 rate increase of 7.5% and a 2011 rate increase of 9.0%. Both of these numbers have been revised. The 2010 increase was a pleasant surprise, at least from the projection. It was a 5.0% increase. However, 2010 has presented a number of challenges to Minnkota and the 2011 increase will now be considerably higher than 9.0%. We do not yet know how much higher, and the answer depends largely on when the increase goes into effect as well as how long the current one half cent energy surcharge remains in place. The bottom line is that the overall average energy price we pay to Minnkota for wholesale

power will likely increase about 0.7 to 0.8 cents per kilowatt hour in 2011. To put this into perspective, a 9.0% increase would raise the overall average energy rate by about 0.5 cents per kilowatt hour. The drivers behind this large increase form a familiar list: depressed energy prices in the pool into which Minnkota sells surplus energy, increased costs of complying with ever-more-stringent environmental requirements at the generating stations, transmission system additions, and less than budgeted sales to member systems. Every one of these factors went in the wrong direction (or not far enough in the right direction) for Minnkota in 2010.

If there is a silver lining in any of this, it's that we still see wholesale rate stability a few years out on the horizon. We've enjoyed very attractive electric costs for decades, thanks in large part to Minnkota's efficient operations. But this transition period is rough and is very challenging for members. A fair question is "what is Cass County Electric



doing to hold the line on its operating costs?" We have been preparing for some years for a time when wholesale costs go up significantly. Most of our efforts have revolved around becoming more efficient. One indicator that this has been happening is our employee count. We will likely end 2010 with 96 full time employees and about 35,400 electric accounts. By comparison, in 2000 we had 21,091 electric accounts and 95 full time employees. Over the past ten years we've added over 14,000 accounts but only one net employee. We've redoubled our efforts at getting more efficient so we can hold our distribution adder – the portion of the graph that shows what it costs CCEC to move one kilowatt hour from the substation to the meter – as low as possible. You may notice from the graph that this cost has been nearly flat for over ten years. One thing (among many) that we're looking at now is to encourage members to go to paperless billing. Mary and I have been on paperless billing from CCEC for over nine years

and it works great. By switching from a paper bill to getting your bill by email and paying through an automatic payment, CCEC saves 46 cents per member per month. If all members switched, this is an annual cost reduction of nearly \$200,000. We know that continued increases in the cost of electricity are not popular and are challenging to the family and business budget. We will continue to work hard to minimize these increases and we ask for your help as well. Small things such as using paperless billing and automatic payment add up to big numbers. Making sure you are using energy as efficiently as you can will add up to even bigger numbers. Take advantage of the energy saving ideas at www.togetherwesave.com and the rebates currently available through the State of North Dakota's Utility Rebate Program (see our web site at www.kwh.com.) And, stay informed on energy issues. As we celebrate October as Cooperative Month, we are ever mindful that we work for, and are owned, by you.

Community of Care

Providing resources and support in rural Cass County



Jane Strommen, Community of Care's executive director, left, sits with Noel Iwen. Noel has used Community of Care's services.

"I wouldn't be where I am without them. They've been a good support for me. They're just like family."

Noel Iwen,
Arthur

In rural areas, there is often a lack of resources available to help older persons and others who need support. Often they just need a place to turn, or simply get questions answered. Fortunately, those resources are available to those living in rural Cass County, and the organization offering those resources is Community of Care. Community of Care was started as a pilot project in 2003 and became incorporated in 2007. Their mission is "to assure older persons and others in need in rural Cass County have access to health, human and spiritual services essential to their well-being and offered within a community of faith." The services offered enable people in the rural areas to remain independent when they otherwise would not have enough help to do so.

Identifying a need

Jane Strommen was working at Arthur's Good Samaritan Center when she and others took notice of a need in the rural area. There were people, they realized, that given the right support and help, could remain independent in their rural communities. "People don't realize it, but even in the small, tight-knit communities, people fall through the cracks," she explained.

In 2003, Strommen, with the help of a steering committee, organized Community of Care as a way to offer help to those in need.

For some, this support means filling out forms for Medicare, for others, it may mean arranging a ride to a doctor's appointment or finding a support group. Whatever the need is, the organization that employs three people, pulls together and decides what they can do to help any individual in Cass County.

“For a variety of reasons, for a small number of people, we’re it,” said Strommen. That is why she wants people in Cass County to know that Community of Care is here to provide many services, no matter how simple or complicated.

“When someone leaves our office because they are so relieved their problem has been solved or we’ve helped in some way – that is a great feeling. To know someone’s life is a little bit better because of our organization, to know we’ve made a difference is important,” said Strommen.

Noel’s story

After 34 years of farming with her husband near Arthur, Noel Iwen found herself on her own. Her husband passed away in 2009 and she was left to figure everything out. Paperwork and financial formalities were overwhelming, but with the help of Community of Care, Noel was able to get everything organized. “I wouldn’t be where I am without them. They’ve been a good support for me. They’re just like family,” Noel said. When she recently had foot surgery, Community of Care arranged rides to doctor’s appointments for her.

Community impact

“When our older citizens feel comfortable and confident about remaining independent in their community – that says something about the vitality of the small, rural community.” said Strommen. Community of Care has experienced a great deal of support from the community. They have over 40 volunteers and more than 300 members. Volunteers can help out in a variety of ways, such as offering a ride to a medical appointment. Community of Care is looking for more volunteers and members. Their membership drive starts in October.

Since its inception, Community of Care has made unmeasurable impact in the lives of those in rural Cass County. A challenge they face is simply getting people to know about them. They have offices in Casselton and Arthur, but extend their services throughout all of Cass County, something many people aren’t aware of. With a little guidance and help from the local organization, Noel Iwen’s life became less stressful, and that’s what Community of Care can offer many. “I feel very at peace with myself to have that office down there,” Noel said.



Cass County Electric Cooperative sponsored a table at Community of Care’s Totally Tables event in April 2010.



Have questions?

Interested in volunteering or becoming a member?

Please contact Community of Care.

Arthur	Casselton
701-967-8502	701-347-0032
877-815-8502	866-347-0032

COC@CommunityOfCareND.com
www.comunityofcarend.com

Look for your Co-op Connections card in your January bill

The Co-op Connections Card is a member benefit card that offers co-op members product and service discounts at participating retail businesses and pharmacies.

Cass County Electric Cooperative will be giving each of its members a Co-op Connections Card.



The Marathon company and Cass County Electric have expanded the offering of Marathon water heaters in our area.

*Preferred
contractors*

- Complete Plumbing Services, Inc.
- Cote Mechanical
- Dakota Heating & Plumbing
- Devitt Plumbing
- DJ's Plumbing and Heating, Inc.
- Heritage Homes
- Home Heating and Plumbing, Inc.
- Kelly Plumbing, Inc.
- Kindred Plumbing and Heating
- Laney's, Inc.
- Mooreton Heating and AC
- Petermann Plumbing and Heating
- Precision Plumbing, Electric, Heating and Cooling
- Prime Plumbing, LLC
- Rasmusson Plumbing & Heating
- Red River Plumbing & Heating
- Riverside Plumbing, Inc.
- RJ's Plumbing and Heating
- Robert Gibb & Sons

REASON #14 to switch to e-Bill

It will make your life easier.

Not to mention you could win a \$50 energy credit!

Sign up for e-Bill and go paperless and we will register you for a chance to win a \$50 energy credit! A winner will be drawn in October, November and December.

Cass County Electric Cooperative
Your Touchstone Energy® Partner
KWH.COM 701.356.4400

Win a trip to Washington, D.C.!

June 11-17, 2011

Here's your ticket for an all-expense-paid trip to Washington, D.C.

Top 5

reasons to enter the essay or poster contest:

1. Winner receives an all-expense-paid trip to Washington, D.C., compliments of Cass County Electric Cooperative
2. Get-acquainted cruise along the mighty Potomac River, with about 1,500 students from all across the country
3. A whole week to visit unforgettable historic monuments, museums and the U.S. Capitol
4. Opportunity to share your ideas on how electric cooperatives can connect with young member-owners
5. A learning experience you'll never forget

- To enter the essay-writing/poster contest, you must be a junior or senior in high school in the fall of 2011.
- You and your parents or guardian must be served by Cass County Electric Cooperative.
- Poster can be any size. Essay is not to exceed two standard 8½ - by 11-inch typewritten, double-spaced pages. Poster or essay are to be created considering this topic:
Electric cooperatives are member-owned and controlled. As a member-owner and future decision maker for your cooperative, describe ways in which new technologies and social media can be used to connect and communicate with you and other young adults.
- Submit your essay or poster in hard copy or electronic format to Cass County Electric. Electronic submissions should conform to the two-page, double-spaced guideline described above. Include a cover page with your name, date of birth, school and grade in 2011, parent or guardian's name, address and telephone number.
- The deadline is Monday, Jan. 24, 2011. E-mailed entries should be directed to cjoyce@kwh.com, and hard-copy entries mailed to: Youth Tour Essay Contest, Cass County Electric Cooperative, 3312 42nd St S, Suite 200, Fargo, ND 58104.

If you have a question, contact Carrie Joyce, Cass County Electric, at (701) 356-4534.



Check it out at www.youthtour.coop

Announcement of 2011 Director Elections

At the 2011 CCEC Annual meeting scheduled for April 18, 2011 elections will be held in districts 2, 4, and 5. If you are a Cass County Electric member residing in one of these districts and are interested in becoming a director, contact Jane Lindemann at (701) 356-4405 for a petition packet. The district map below can help you determine which district you live in. Petitions must be received in the Kindred office ninety (90) days before the annual meeting date (no later than January 18, 2011).

Directors up for re-election are:

District 2	Bill Bertram, Valley City
District 4	Jeff Triebold, Fargo
District 5	Steve Swiontek, Fargo

Directors are elected by ballot for a three-year term.

In accordance with Article III, Section 3.6, of the Bylaws:

Section 3.6. Nominations. Members who are eligible to serve as a Director may be nominated for election to the Board as set forth below.

(A) Nominating Petition. Persons who desire to serve as a member of the Board must deliver to the Cooperative office in Kindred, North Dakota each of the following at least ninety (90) days prior to the date of the Annual Member Meeting at which an election will be held:

- (i) a petition signed by fifteen (15) or more Members or spouses of Members who reside in the district from which nomination is to be made, placing in nomination the name of a bona fide Member residing in such district. In the event of Joint Membership, the signature of only one of the Joint Members may be counted toward the fifteen Member requirement; and
- (ii) biographical information and such other information as the Board or Credentialing Committee may require to establish and verify the qualifications of the proposed Director to serve.

The names of all candidates who submit the required information in the time and manner specified in this provision will be submitted to a credentialing committee consisting of between 3 and 8 members, as determined by the board of directors. The credentialing committee may require candidates to provide and verify additional information deemed relevant by the credentialing committee. (CCEC Bylaws and Articles of Incorporation can be found at www.kwh.com; a written copy is also available upon request.)



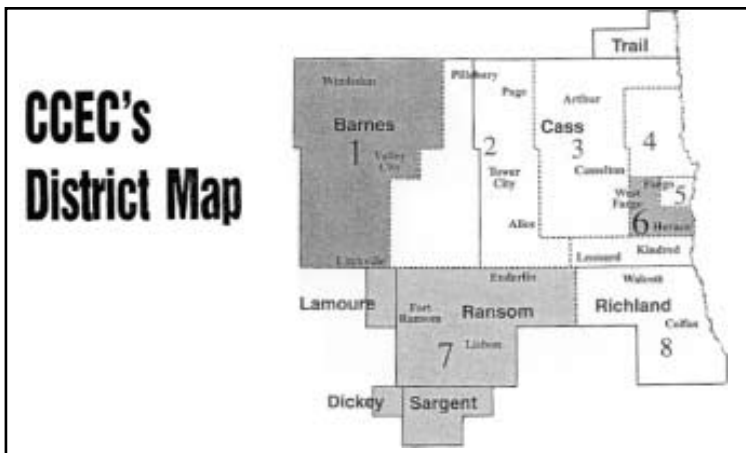
Bill Bertram, Valley City
District 2



Jeff Triebold, Fargo
District 4



Steve Swiontek, Fargo
District 5



TOGETHER WE SAVE

tip of the month

Use your ENERGY STAR qualified appliances like an energy star.

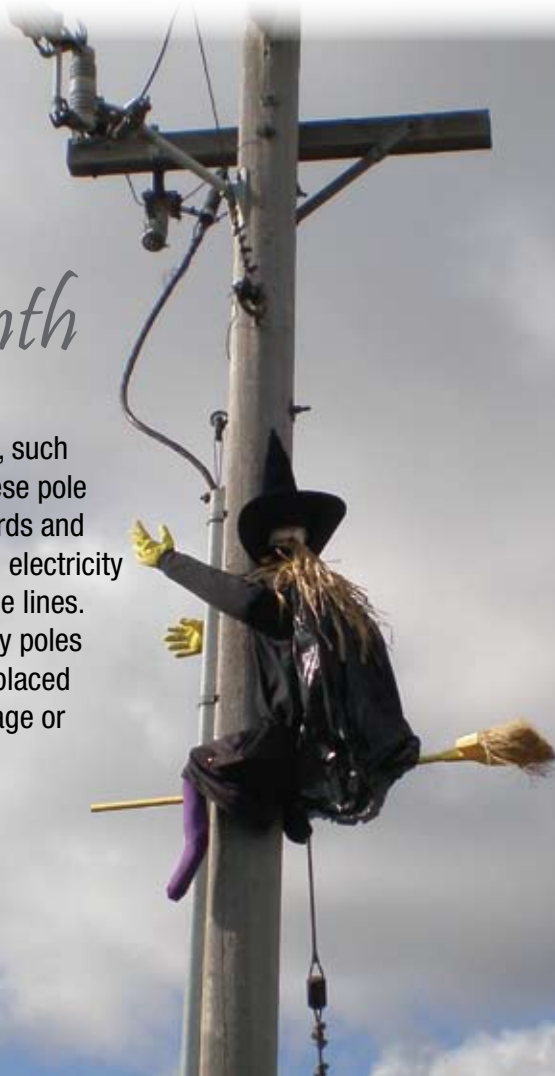
While buying ENERGY STAR qualified appliances is a great way to save energy, it's only the first step. The second step is knowing how to get the most out of them. By doing simple things like using more efficient settings, setting a sleep timer on your TV and turning things off when you are using them, you can save even more money.



Safety

tip of the month

Never attach things to utility poles, such as deer stands or decorations. These pole attachments create climbing hazards and enable those not experienced with electricity to become dangerously close to the lines. Remember, transformers and utility poles are the property of the utility that placed them. It is against the law to damage or change the property.



Have a favorite recipe? Share it!
Recipes chosen will be published with
the member's name and city location.

Submit recipes to:
recipes@kwh.com or
Cass County Electric Cooperative
Attn: Carrie Joyce
3312 42nd St S, Suite 200
Fargo, ND 58104

Waikiki Meatballs

Dana Viken, West Fargo

20 min prep time
25 min cook time
yields 6 servings

1 1/2 lbs ground beef
2/3 cup crushed saltine cracker crumbs
1/3 cup minced onion
1 egg
1/4 cup milk
1 1/2 tsp ground ginger
1/2 tsp salt
1 Tbsp olive oil

2 Tbsp cornstarch
1/2 cup packed brown sugar
1 (15 oz) can pineapple chunks (drained, with juice reserved)
1/3 cup white vinegar
1 Tbsp soy sauce
1/3 cup chopped green bell pepper

In a large bowl, combine ground beef, cracker crumbs, onion, egg, ginger and salt. Shape mixture by rounded tablespoonfuls into meatballs. Heat olive oil in large skillet over medium heat. Place meatballs in skillet and cook until evenly brown and meat is no longer pink. Drain excess fat. In a small bowl, combine the cornstarch, brown sugar, reserved pineapple juice, vinegar and soy sauce. Mix until smooth, pour into the skillet with meatballs. Cook, stirring constantly, until mixture thickens and boils, about 5 minutes. Stir in the green pepper and pineapple chunks. Heat through. Serve with rice.

Barley Mushroom Risotto

Peggy Miller, Fargo

4 cups chicken stock
2 Tbsp. olive oil
1 medium-sized onion, chopped
1 cup pearl barley
1/2 cup dry white wine
1/4 lb. chopped fresh portobello mushrooms, stems removed
2 shallots, finely chopped
2 Tbsp fresh parsley, chopped
Salt and pepper to taste
1/4 cup grated Romano cheese

Bring chicken stock to a boil in medium pan. Turn off heat and cover.

Meanwhile, heat 1 Tbsp. olive oil in large skillet over medium heat.

Add onion, and saute about 5 minutes, or until translucent; reduce heat to medium low. Add barley, and stir to coat with oil. Add wine, and cook, stirring until wine is absorbed.

Add chicken stock 1/2 cup at a time, stirring frequently, adding more when liquid is almost absorbed. Cook until barley is tender but firm to the bite, about 35-40 minutes; Meanwhile, add remaining Tbsp. of oil in a pan and saute mushrooms and shallots until soft. Stir mushroom mixture and parsley into risotto; add salt and pepper to taste. Sprinkle with cheese.

picture of the month
submitted by you



CCEC would like photographs taken by members. Please e-mail your photos for publication to photos@kwh.com in a high resolution format along with the first and last name of the photographer. One photo will be published per month.

Watching the dike
Bruce Lykken, Kindred

the ad pages

Beautiful, well cared for Baldwin piano, lovely pecan wood (Hamilton), bench incl, perfect Christmas gift, \$2000. 701.729.6655.

Men's Columbia jacket, gizzmo green & blue w/ blue zipout liner, 3X, like new, \$25. Men's blk leather dress coat, large, like new, \$75 OBO. 701.277.7088

Nikon D40 35 mm camera, 2 lenses 18-55 & 55-200, 2GB memory card, quick charger, soft side bag. \$500. 701.367.9168

Commercial jet table saw & sawdust collector. 10" tilting arbor saw, mobile base w/ extension, exc shape. 701.799.3760

Large set of mechanics tools w/ tool box & cabinet, can repair construction equip, farm equip, & vehicles. 701.588.4315

Collection of stationary engines, all on carts, in running condition. 1906 5hp Waterloo Boy. 1928 1.5 1/2 John Deere. 2 McCormick Deerings LB's. 1 1/2 to 2 1/2 hp. 3-5 hp. 701.840.0224

Rims & Tires. 2- P195/75 R14 m/s. 4- P215/75 R14. 2- P225/70 R14. Has a 4" center on all mag rims, tires are all in great shape & have been in the house year round, \$170 for all rims & tires. 701.683.5315

3 yr dun Arabian gelding, well built, good conformation, quiet, gentle, willing to work, good ground manners, ties, stands for ferrier, started lunging, current vaccinations, worming, real nice gelding. 701.668.2770

Antique American Kitchens enameled sink top w/ drain boards, 54" X 26", \$40. Jalousie slat windows, 2 - 34"H X 45"W; 1 - 28 1/2"H X 18 1/2" W, \$10/ea. 2 occasional Ikea chairs, silver-gray, \$15/ea or \$25/pair. 1960s dinette; 2 chairs/small drop leaf table, \$15. 701.237.0281.

Ruger M77 30-06 Rifle, wood stock, good cond w/ Simmons 3x9 scope, \$450. 701.388.8708

Fuel tanks, 450 gal, w/ stand. 300 gal. 265 gal. Wood burning shop furnace, takes 12" logs. Propane shop stove, perf cond, 20,000 Btu. 701.646.6604

Bruno scooter, chair vehicle lift, like new, \$1050/OBO. 701.749.2669

Thomas the Train toddler bed, like new, includes comforter & sheets, 34" x 73", \$150/OBO. 701.527.5694

Old cast iron bath tub w/ iron skirt. Cast iron kitchen sink w/ drain board. Semi flatbed truck tarp, make offer. Cast iron balance scale w/ weights, \$50. Majestic wood burning stove #30, \$20. 701.437.2863

Elec Lowrey MX2 organ, beautiful wood cabinet, 2 keyboards, pedals, padded bench, great sound, numerous features. Besides in home, use in chapel, school, café. Reasonable. 701.282.7007

Quarter horse named Willow needs loving family, gentle, great w/ kids, saddle and bridle avail. Horse free, tack extra. 701.640.0058

Tires. 2- P235/55R17, 1-P225/60R16, \$25/ea. Neuton Battery Powered mower, CE 6.3, 19" cut, mulches & bags, pd \$499 sell for \$350, like new. 701.277.8433

Muzzle loader, never used, \$200. Scottish claymore sword, cost \$2200, \$1600. 1930's desk chair, \$20. Brass potted artificial tree, cost \$125, \$40. Nebulizer, never used, cost \$650, \$200. 1930 oak 4-ball poster bed w/ frame, \$325. 1900 wood frame, \$150. 1920 table needs refinishing, \$150. 701.552.1449. 701.552.1449

Kimball piano model 4243 French Provincial Cherry \$1000/OBO. 701.845.2663

Thomasville 79"H X 51"W Hutch, 44" round table w/19" leaf & 4 chairs \$400. 12' aluminum Silverline fishing boat, 6hp Evenrude motor w/gas tank & stand \$600. 701.282.3679

3 TB horses \$750.00 ea. Extremely gentle, nice home wanted, we're out of room. 6 yr Gelding will make a great trail horse. 7 yr Mare prospect earned \$40,000. 2 yr. Mare/Race prospect w/ exc breeding. 701.371.2232

NordicTrack Audio Strider 800 elliptical trainer, adj ramp, interplay music port, I-fit (interactive card workout technology), bought at Sears 3 yrs ago, perfect shape, \$550. 701.492.2768

Sears elliptical exerciser, bought Jan 08, used very little, model/serial # 23765, exc cond, \$300. 701.492.3920

99 Toyota Corolla LE, 4 dr, blk, 34 mpg, \$1,800. 701.282.7117 or 218.948.2120

Frigidaire Gallery series front loading washer, 2001, 11 cycle, heavy duty, XL capacity, great working cond, \$350/OBO. 701.232.1921

Weider Pro 9940 Home Gym, 2 seats w/ multiple workouts, H 77"/W 80"/D 55", \$125. 701.293.0208

04 Honda Civic EX, 2 dr, blk, rear spoiler, sunroof w/wind deflector, tinted windows, molded mud guards, auto-start, 17" chrome wheels & extra set of factory allow wheels & new tires, 68k, nice car, well maintained, \$10,000/OBO. 701.730.6034

Brand new Eddie Bauer insulated picnic tote, incl place setting for 2 & cutting board, has other zippered compartments, 14 X 9 X 10", navy canvas w/ shoulder strap, \$25. 701.433.0750

John Deere heavy duty 60" rotary broom for compact utility tractor, taken off of 4210 John Deere, have manual & installation instructions, also dust deflector. 701.282.8208 or 701.238.2782

L-shaped desk, 60" x 39.5", lt brown base w/ locking cabinet/printer stand & shelving, 2 drawers, blk top, good cond, \$65. 701.412.5162

Wanes coat, cedar, lighter color, used, tongue groove, approx 180 pcs, 48" X 5", also 4 panels 39"x76". \$200/OBO. 701.281.1624

94 Ford Explorer, 114K, runs great, good hunting vehicle, \$2000/OBO. 701.306.0285

Century Fiberglass Tonneau Cover, includes lock, 01 Ford Ranger, flare side, dark blue, \$100. Vic Firth beginner drum kit for beginning percussion student, includes drum pad, stand & bells, \$200. 701.730.5099

99 black Olds Intrigue, power everything, CD/Cassette, sunroof, spoiler, 156k, \$2400. 701.793.5803

Competitor padded weight bench, bench press, leg lift, curls, exc cond, \$80. 701.212.8551

Late 70s Ford 335 diesel utility tractor, avail w/ loader bucket, cab, 3pt hitch w/ pto. 7 1/2' snow blower attach, 6' bush hog rear mower, & 8' gravel blade, \$5000. Kitchen Aid side by side refrigerator w/ water & ice maker, Whirlpool glass top stove, almond color & approx 5 yrs old, exc cond, \$800/OBO. 605.949.3052 or radelman@innovishhealth.com

3-piece sectional sofa & matching love seat, tan color w/ small brown strip. 701.645.2453

Winter boat storage, Eagle Run area. 701.361.7770

89 Rockwood 33' basement model motor home, Ford 460 v8 engine on John Deere chase, 33k everything works, ready to go, clean, mint condition, all orig furnishings, \$8000 firm. 701.282.3469

Rye seed, cleaned or bin run. 701.998.2882

9-drawer dresser w/ mirror, dark color, \$75. 701.730.2205

Size 110-90 & 100-90 motocross tires, all in good shape, some almost new. Smart parts ion, w/ ups and many other items. Cody, 701.282.5883

Alto Saxophone, good shape, w/ case, \$350. 701.541.2726

4-ball oak post bed w/ frame, full, \$320. 1920 table needs refinishing, \$100. 1900 antique wood stove, \$150. 4'x4' bird cage, \$100. Oak 1957 buffet, English, \$400. 1920's dining table, \$400. Wood chair, \$45. 701.552.1449

Stoeger Over & under shotgun, never fired, won in raffle, model #31030, 28" barrel, walnut stock, overall length 44", weight 7.4 lbs, \$325. 701.361.2551

08 Polaris Sportsman 500 EFI X2, 4x4, Red, winch, heated handle grips, 2 person, very nice, 650 mi, \$5900. 05 Yamaha Kodiak auto 400, 4x4, blue, winch, heated handle grips, nice shape, 48" snow push blade, 860 mi, \$3900. 701.371.4821

65 16' Glastron Boat, sharp customized interior, mint condition. Collectors 10 HP Johnson motor, works great! 701.371.3450 or 701.235.2300

Reese 14K 5th wheel hitch plus gooseneck hitch. Fiberglass white topper, Ford 3/4ton pickup measures 6'10". 701.532.0395

Amish elec fireplace, oak finish, used one year, includes remote, \$250. Electric radiator heater, \$10. 3-6' long x 6" w x 2" rounded edge, cedar, \$5/ea, offer. 701.356.0625

KFGO mugs, 1987, 1995-2007, offer. 701.845.2108

50 canning jars, pint & quart, \$10. Tell City hutch & buffet, very nice, \$400. 701.235.5124

32" woven wire, 6" spacing. Barb wire. All wire new. 24.5 x 32 10 ply tire, like new. 5.6 ft Steel T posts. 701.762.3665

HVAC parts: Dayton 1/4 motor w/ run capacitor, 1/2" shaft, 208V - 240V, \$30 new, \$78. Contactor 30 amp contacts, 24V coil \$5. Computer parts: Two 512MB PC2-4200 memory modules for laptop \$20 each, two 512MB PC3200 for desktop \$20 each. 701.793.4324

Sunsetter 12" retractable awning (Model 900) burgundy stripe, w/ mat & screen room, like new, original cost, \$1200, sell for \$300 (Burgundy Stripe Model 900 (see at www.sunsetter.com). 701.235.1394

Broadmoor Series 42" snow blower, fits simplicity mower, includes chains and wheel weights, used very little, \$300. 701.252.6628

Liberty Falls Village; 200 + piece miniature Americana collection depicts the old western community of Liberty Falls, CO; small homes, mansions, businesses, village buildings, 40 boxes of accessories (villagers, children, trees, streetlights, telephone poles, bridges, farm & domestic animals, vehicles, etc.) sculpted & master-crafted highlighting architectural details of frontier town & inhabitants. \$350/OBO. 701.277.4872

50 ft., 30 amp camper extension cord, \$50. Mirror extensions for a '08 Dodge Ram 1500, \$30. 701.261.8810

Janome portable sewing machine, works well, \$25. Cart for music students to roll their instruments, \$15. 701.277.0681

Red metal bunk bed twin over full, \$100/OBO. Blue swivel, rocker, recliner chair, \$50/OBO. 701.282.5249

Craftsman 10" radial arm saw, \$175. Dehumidifier, \$20. 15 cubic ft. chest freezer, \$100. Marcy weight bench, \$75. Bars and 300+ lbs of weights, \$175. 701.235.9980

2003 Gas Yamaha golf cart with trailer. 3500.00. Heavy duty transfer pump with 825 Briggs & Stratton motor 250.00. Para Body workout bench 500.00. Universal sewing machine 45.00. 701.639.0541

FREE

Large computer desk, white/tan color. 701.282.9428

WANTED

Trailer/cart to pull behind ATV, prefer one w/ ATV or balloon tires & molded poly/plastic trailer bed. 701.361.7770

Two or three bale feeder wagon, needs to be in good shape. 701.645.2478

Good running jet ski & standard size roll away basketball hoop. 323.851.7978

Ad Policy

- All ads must be 35 words or less.
- Ads will be abbreviated following our guidelines.
- No real estate or commercial ads will be accepted.
- Ads are published for members at no charge as space permits on a first-come-first-served basis.
- Ads are due by the 15th of the month prior to publication.
- Members may submit only one ad per issue.
- Ads must be resubmitted to run an additional month.
- Editor reserves the right to edit or reject any ad.
- Mail ads to: Editor, Highline Notes
4100 32nd Ave. SW
Fargo, ND 58104
- E-mail ads to: ads@kwh.com
- We prefer ads be sent by e-mail.



P.O. Box 8
Kindred, North Dakota 58051
800.248.3292
www.kwh.com

Cass County Electric is a member of Touchstone Energy, a national alliance of local, member-owned electric cooperatives providing high standards of service to all members, large and small. In order to qualify as a Touchstone Energy partner, electric cooperatives must be active members of their communities, dedicated to serving all members with integrity, accountability, innovation and commitment to community.



CASS COUNTY ELECTRIC
COOPERATIVE PRESENTS

the

UGLY

FRIDGE

CONTEST

THROUGH NOVEMBER 30

UGLY = OLD AND INEFFICIENT

How old and inefficient is your refrigerator?
Enter Cass County Electric Cooperative's
Ugly Fridge Contest and you will be eligible
to win a new ENERGY STAR refrigerator.

To enter, send a picture of your inefficient refrigerator
along with your name and address to cjoyce@kwh.com
or CCEC, 3312 42nd St S, Suite 200 Fargo, ND 58104.

CONTEST RULES:

- Must be a CCEC member.
- Refrigerator must be in use in kitchen in CCEC service territory.
- Ugly fridge pictures will be put into a random drawing to determine winner.
- CCEC will dispose of your old refrigerator.
- New refrigerator will be chosen by CCEC.
- Entry must be received by November 30.