

Cass County Electric Cooperative

A Touchstone Energy® Cooperative 

Cass County Electric Cooperative (CCEC) is a not-for-profit, member-owned electric distribution system, serving over 50,000 members across 10 counties in southeastern North Dakota since 1937. Headquartered in Fargo, and led by President/CEO, Marshal Albright, CCEC is the largest distribution cooperative in the state.



Safety, Integrity,
Innovation, Accountability,
Commitment to
Community

CORE VALUES



To serve our members'
energy needs with
affordable
& reliable electricity.

MISSION



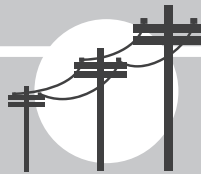
Fargo, Kindred, Arthur,
Lisbon, & Valley City

SERVICE CENTERS



92 Full-time
4 Part-time

EMPLOYEES



2,912.93 Overhead
2,763.16 Underground

5,676.09 Total

MILES OF LINE



Cass, Barnes, Traill,
Richland, Ransom,
Sargent, Dickey, LaMoure,
Steele, & Stutsman

SERVICE AREA

POWER SUPPLY: 55% ND Clean coal • 34% ND Wind • 8% ND Hydro • 3% Other

2018 KILOWATT HOURS SOLD:

1,280,187,091 kWh

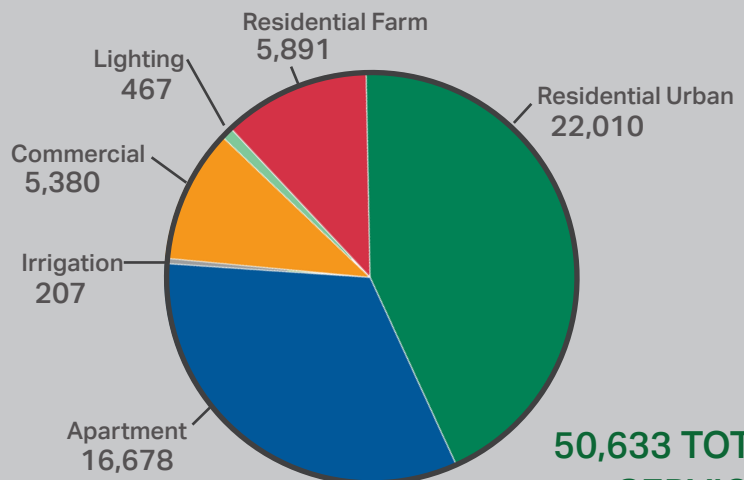
2018 REVENUE:

\$136,761,156

BOARD OF DIRECTORS

Marcy Svenningsen, Board Chair
Jeff Triebold, Vice Chair
Glenn Mitzel, Secretary
Sid Berg, Treasurer
Wendy Loucks
Russell Berg
Tom Seymour
Douglas Anderson
John Froelich

MEMBERSHIP TOTALS



50,633 TOTAL SERVICES

02/01/2019